

# VINNOE10

Slim, Compact, Powerful





## VINNOE10

---

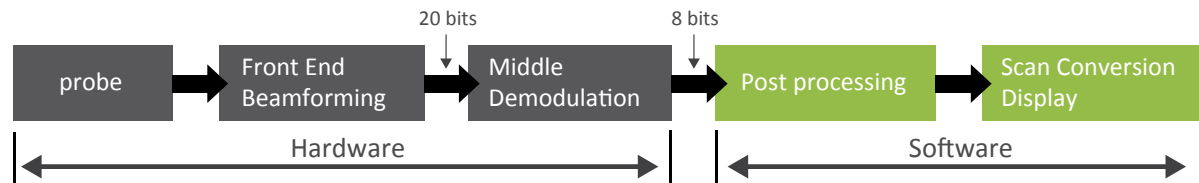
E10 offers value added performance, flexible configuration and compact design to meet with varied clinical requirements. Its simplicity and mobility make you good alignment with narrow space.

- » Core Technology
- » Compact Concept
- » Powerful Function

## Core Technology

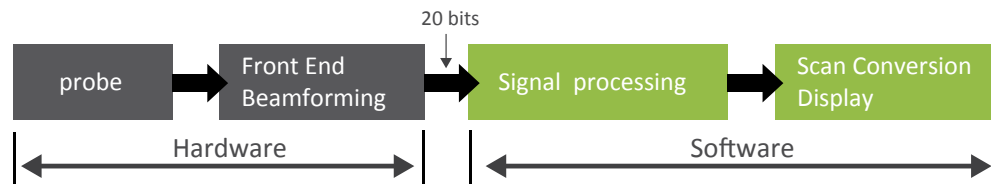
E10 transplants VINNO core technology RF platform into a slim and compact design concept. Due to the outstanding signal process technology, it delivers clear image quality. Slim body, light weight and small footprint make it ideal for small space and more mobility.

### Traditional Ultrasound Platform — Image data processing platform



### Innovative RF Ultrasound Platform

RF signal data processing platform for better resolution and definition



✓ Bigger data to compute for better image quality.

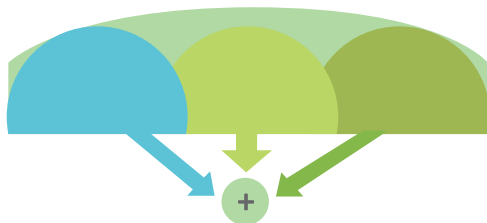
✓ Non-linear demodulation to strong signal.

✓ More accurate and higher step calculation.

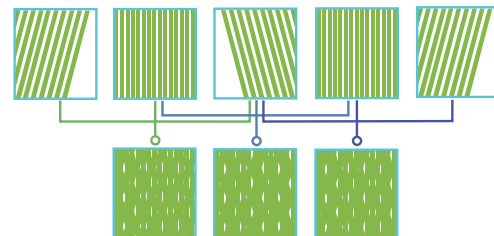
✓ Processing algorithm based on signal data, not image data.

✓ Flexible algorithm on data processing.

### Frequency Compound Imaging



### Spatial Compound Imaging

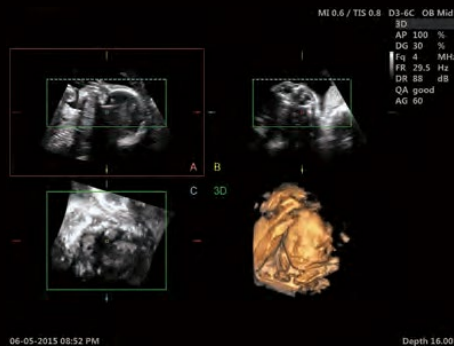


## Powerful Function

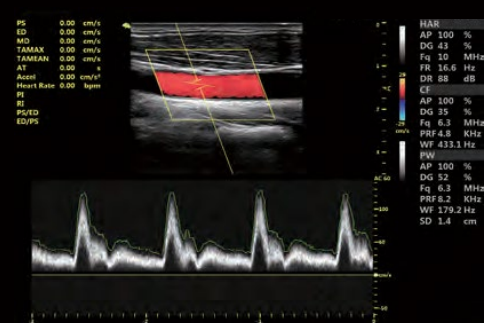
E10 offers you a lot of convenient and fast operation and measurement tools which make your daily work efficient and comfortable.

VINNO focuses on your requirement and always brings you more useful solution.

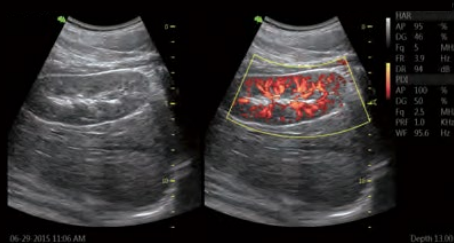
- » Triplex
- » Auto Optimization
- » Easy Compare
- » Full Screen
- » Pview
- » Needle Enhancement
- » Smart 3D/4D Function
- » Auto Measurement  
(Auto IMT/ Auto NT/ Auto PW/ CW trace)



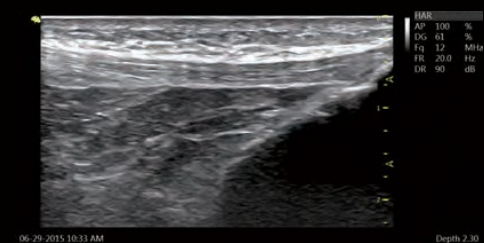
24 weeks fetal face-4D mode



carotid-PW mode, Auto trace



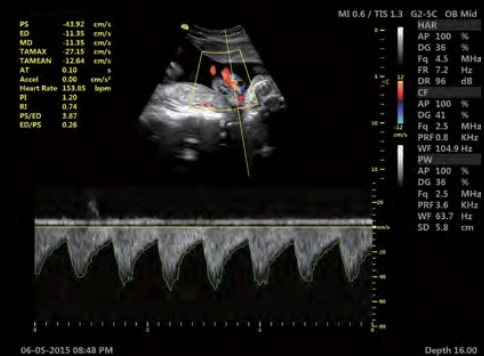
kidney-dual synchronize mode



patella tendon-B mode



liver-B mode



umbilical cord-PW mode





Fast Connectivity  
Bluetooth/ Wireless Network/ DICOM3.0



Image post process, synchronization with your mobile phone



## Slim, Compact Design

- » 19 inch professional LED monitor gives you more clear view.
- » 10 inch smart touch panel enables the operation more convenience.
- » Pinless and flat probe connection make you more comfortable.
- » 500G HDD ( big enough for volume data storage ).
- » B/W video printer slot.







**Hounisen Laboratorieudstyr A/S**

Niels Bohrsvej 49 · 8660 Skanderborg · Tlf. +45 86 21 08 00 · E-mail: salg@hounisen.com

[www.hounisen.com/i-praksis](http://www.hounisen.com/i-praksis)